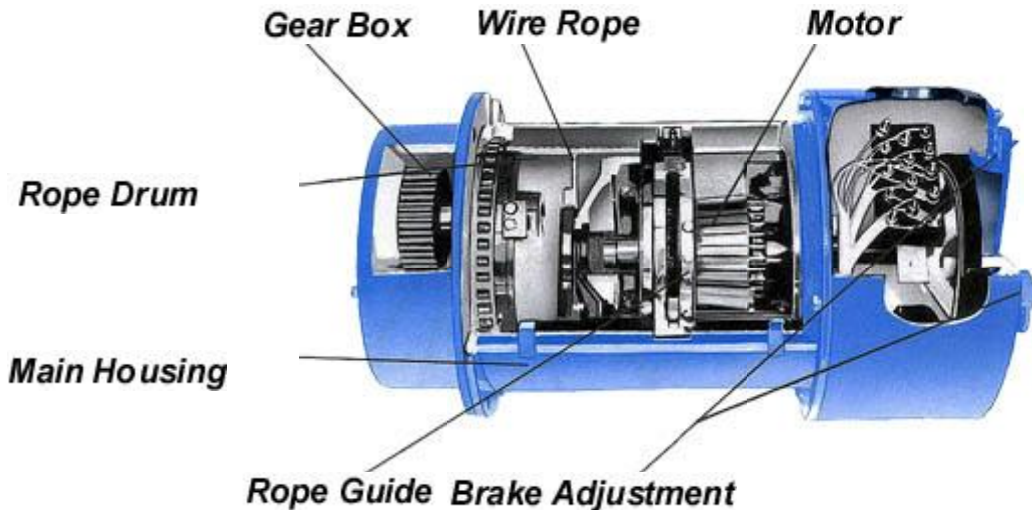


ISC Machines Electric Wire Rope Hoists

Shown below is a cut-section of a typical **ISC Machines Wire Rope Hoist** outlining the salient features of the hoist. Please click on the labels to learn more about our hoists.



Gear Box -

Precision spur gears are made of high quality steel and are machined from solid blanks. Hardened gears and the use of lubricants reduce wear to a minimum. The gears are enclosed in a cast iron housing and precision ball or roller bearings are used at all points of support.

Wire Rope -

The wire rope is made of high quality improved plough steel with pre-formed strands. Large *drum to wire rope* and *sheave to wire rope* ratios assure long cable life.

Motor -

The 3-phase *squirrel cage induction motor* used in the **ISC Machines** hoist is of the conical type. It is insulated in class F and specially designed for crane and hoist duty with standing and stalling torques of approximately 220% and 290% respectively.

Rope Drum -

The rope drum is rolled, welded and precision machined from high grade steel. It is driven by the gearbox through an internal gear rim and supported by large diameter roller bearings. Machined rope grooves and ample drum diameter ensure the best possible working conditions for the rope.

Main Housing –

All parts of the hoist unit are enclosed in the main housing thus forming an integral unit. The main housing is of welded steel construction equipped with mounting brackets for various types of mounting.

Rope Guide -

A rope guide with built in rope tightener is delivered as a standard item to ensure correct winding of the wire rope under all conditions.

Brakes and Brake Adjustment -

Motors of the conical rotor type have an axial movement of the rotor which is used to activate the brake. This is the most simple and reliable system available. The brake is automatically applied when the power is off. This provides a fail-safe system and eliminates solenoids, adjustable air-gaps, and other similar headaches.

ISC Machines' conical brakes are designed to withstand 200% of full load motor torque.

In addition the unique brake adjustment feature on **ISC Machines** hoist greatly reduces down time and maintenance. The brake adjustment is made simply by removing the same number of shims from each of the bolts holding the brake end cover.

Additional Features

Micro-Speed -

The **ISC Machines** *Micro Speed* unit cuts normal lifting speed to about one tenth. This feature can be invaluable in handling heavy or delicate loads. Once installed, the *Micro Speed* unit becomes an integral part of the motor although it operates independent of the normal lifting speed. The micro speed remains constant regardless of the load. This valuable optional feature is available on all **ISC Machines'** hoists.

Limit Switches -

A *Limit Switch* with adjustable stops for top and bottom position of the hook is incorporated as a standard feature of each and every hoist. This switch is activated by the rope guide.

Wiring -

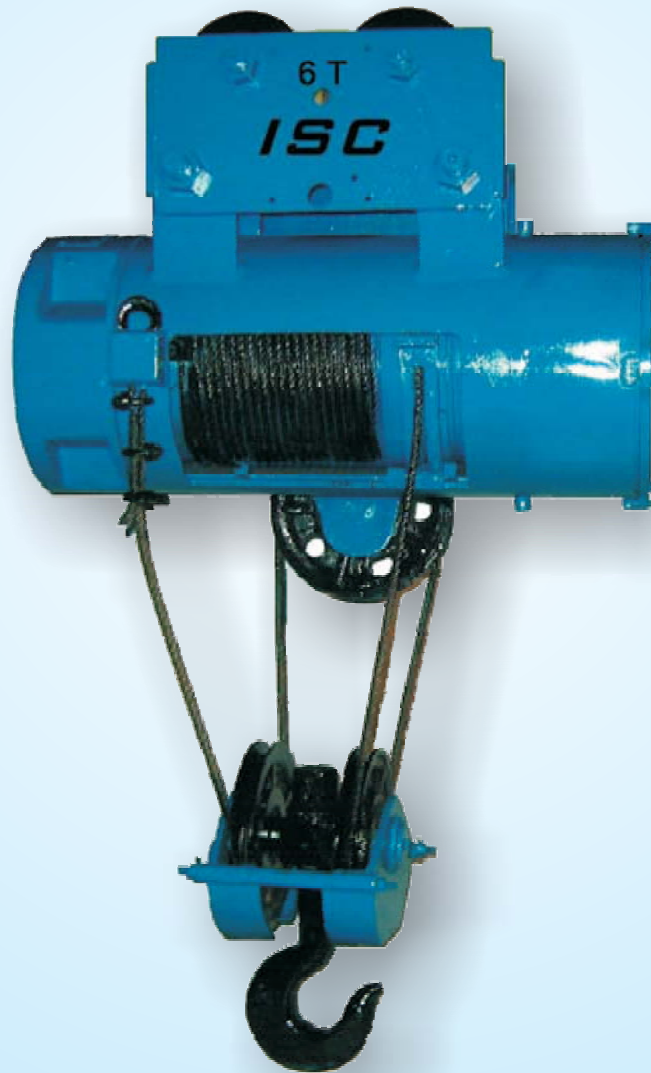
All electrical wires are totally enclosed and conform to international electrical codes.

Bearings -

Anti-friction, precision ball or roller bearings support both ends of the shaft



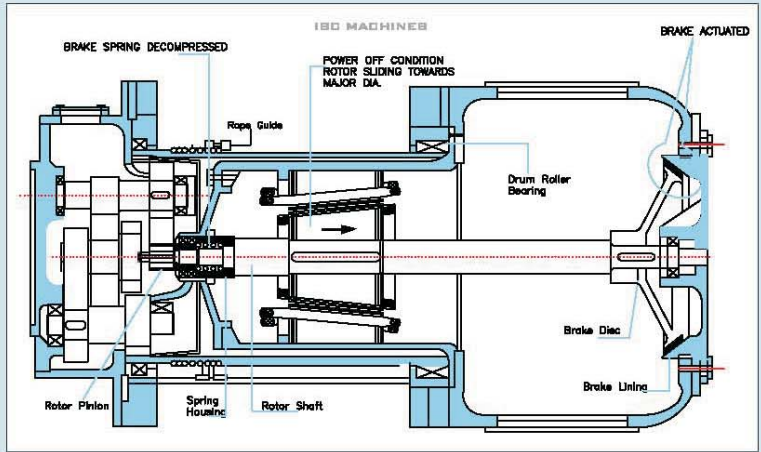
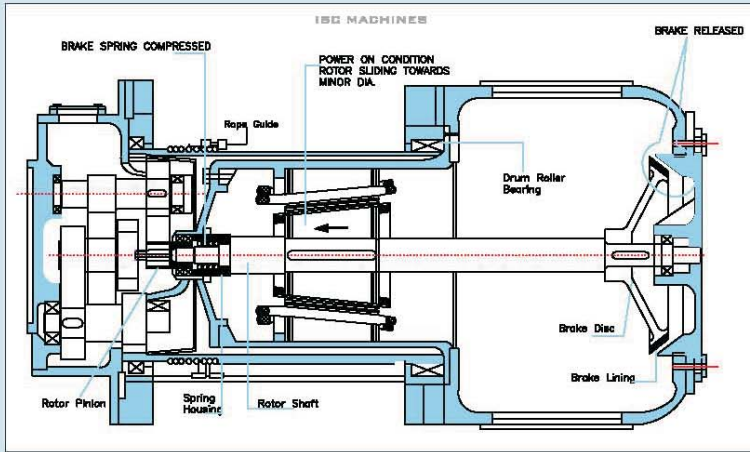
ISC MACHINES



Electric Wire Rope Hoist

ISC Compound, Janta Market, LBS Marg, Mumbai - 400078 India
Ph.: +91 22 6580 3944 Fax: +91 22 2594 0553
e-mail: iscudyog@gmail.com web: www.iscindia.com

FAIL PROOF BRAKE ACTION ARRANGEMENT



Gear Box -

Precision spur gears are made of high quality steel and are machined from solid blanks. Hardened gears and the use of lubricants reduce wear to a minimum. The gears are enclosed in a cast iron housing and precision ball or roller bearings are used at all points of support.

Wire Rope -

The wire rope is made of high quality improved plough steel with pre-formed strands. Large drum to wire rope and *sheave to wire rope* ratios assure long cable life.

Motor -

The 3-phase squirrel cage induction motor used in the **ISC Machines** hoist is of the conical type. It is insulated in class F and specially designed for crane and hoist duty with standing and stalling torques of approximately 220% and 290% respectively.

Rope Drum -

The rope drum is rolled, welded and precision machined from high grade steel. It is driven by the gearbox through an internal gear rim and supported by large diameter roller bearings. Machined rope grooves and ample drum diameter ensure the best possible working conditions for the rope.

Main Housing

All parts of the hoist unit are enclosed in the main housing thus forming an integral unit. The main housing is of welded steel construction equipped with mounting brackets for various types of mounting.

Rope Guide -

A rope guide with built in rope tightener is delivered as a standard item to ensure correct winding of the wire rope under all conditions.

Brakes and Brake Adjustment -

Motors of the conical rotor type have an axial movement of the rotor which is used to activate the brake. This is the most simple and reliable system available. The brake is automatically applied when the power is off. This provides a fail-safe system and eliminates solenoids, adjustable air-gaps, and other similar headaches.

ISC Machines' conical brakes are designed to withstand 200% of full load motor torque.

In addition the unique brake adjustment feature on **ISC Machines** hoist greatly reduces down time and maintenance. The brake adjustment is made simply by removing the same number of shims from each of the bolts holding the brake end cover.

Additional Features

Micro-Speed : The **ISC Machines Micro Speed** unit cuts normal lifting speed to about one tenth. This feature can be invaluable in handling heavy or delicate loads. Once installed, the Micro Speed unit becomes an integral part of the motor although it operates independent of the normal lifting speed. The micro speed remains constant regardless of the load. This valuable optional feature is available on all **ISC Machines'** hoists.

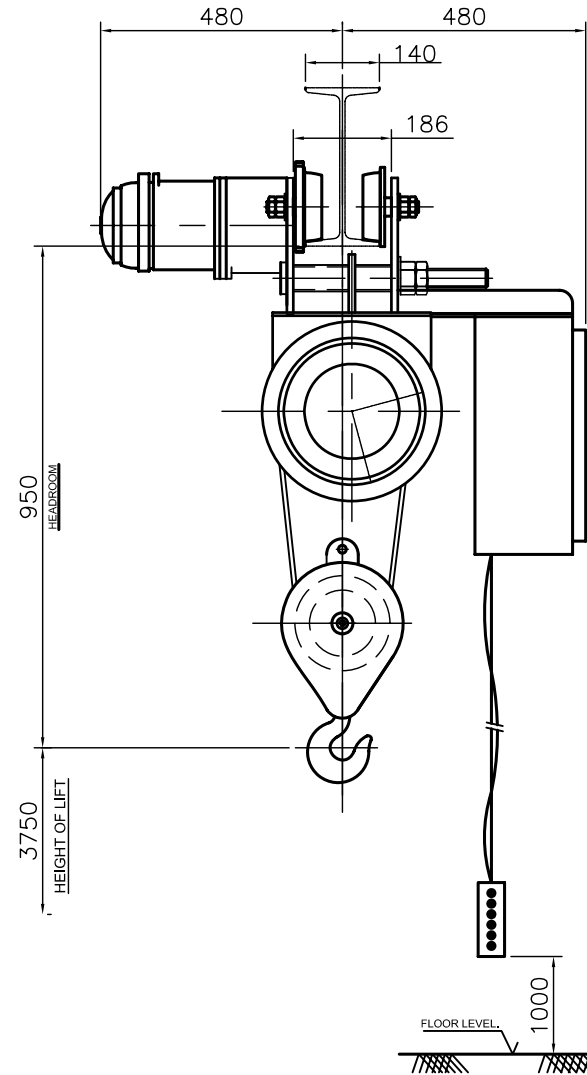
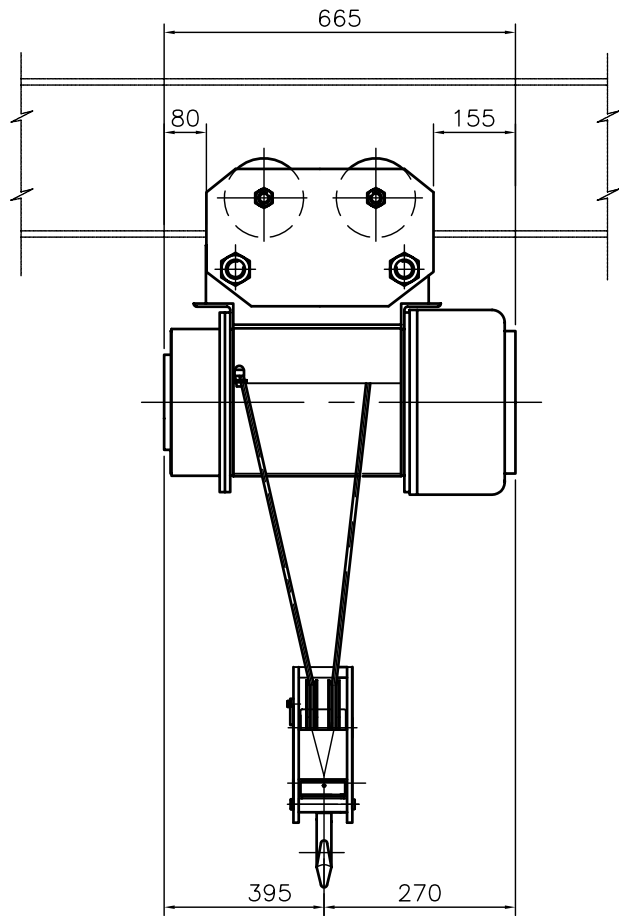
Limit Switches : A Limit Switch with adjustable stops for top and bottom position of the hook is incorporated as a standard feature of each and every hoist. This switch is activated by the rope guide.

Wiring : All electrical wires are totally enclosed and conform to international electrical codes.

Bearings : Anti-friction, precision ball or roller bearings support both ends of the shaft

HOIST SPECIFICATION

Model	Lifting Capacity (Kg.)	Height of Lift (M)	Hoist Speed (m/min.)	Motor (HP)	Wire Rope (mm)	No. of Falls	Class	Hoist Weight (Kg.)
2200	1000	7.5	10	3	8	2	II	160
2200	2000	3.75	5	3	8	4	II	300
4400	3000	10	7	6.5	13	2	II	525
4400	6000	5	3.5	6.5	13	4	II	760
8800	10000	18.25	5	15	16	4	II	1940



TECHNICAL CHARACTERISTIC

CAPACITY	2.0 TONNES.
HEIGHT OF LIFT	3.75 METERS.
CLASS / DUTY	CLASS II / MEDIUM.
NO OF FALLS	4
HOISTING SPEED	10.0 MTRS / MIN.
C. T. SPEED	12.0 MTRS / MIN.
HOIST MOTOR	3.0 HP, 1440 RPM,] SO CAGE CONICAL ROTOR.
C. T. MOTOR	1 HP, 1440 RPM,] 1.0 HR RATED, CL " F" INSU.
WIRE ROPE	Ø8 mm, 6x 36 CONST. 180 kg / mm2 UTS. FIBRE CORE.
POWER SUPPLY	440 V 3 PHASE A. C. 50 HZ.
CONTROL SUPPLY	110 V 1 PHASE A. C. 50 HZ.



DRAWN BY	TRUPTI	05.05.08
CHECKED BY	L.S	06.05.08
APPROVED BY	A.K.R	06.05.08
ISC MACHINES		
ISC COMPOUND L.B.S. MARG, JANATA MARKET BHANDUP (W), MUMBAI-400078 TEL:56803945		
DIMENSIONS IN MM UNLESS OTHERWISE STATED		

CUSTOMER : CAFE FLORIANA.	
TITLE : GA DRW. WIRE ROPE HOIST 2 Ton	
SCALE :	M.SPECIFICATION :
	DRG.No. : ISCM-JOB-2200
	SHEET :

FAIL PROOF BRAKE ACTION ARRANGEMENT

